

# Bailey & Mackey Ltd



This type of switch has been specifically designed to handle high pressure gas applications for monitoring pressures over 42 bar, where the pressure to be monitored is higher than a diaphragm switch can accommodate. Based on the Bourdon tube principle there are no seals adding friction and consequently can be used in gas applications.

- Accurate and Stable
- Long service life
- Bourdon Tube Mechanism
- SPDT Micro-switch
- Gold Contacts Available
- CE Marked



## *M*echanical Specifications

### Pressure Ranges

---

10 to 100 bar  
10 to 200 bar  
20 to 400 bar  
30 to 600 bar

### Standard Materials

---

<b>Case</b>	Black Enamelled Steel
<b>Internals</b>	Coiled Steel Tube
<b>Connection</b>	Brass

**Temperature Limits**                      -10°C to +85°C

Electrical Connection via 4 pin plug & Socket

### Electrical Rating

10 Amp at 250V 50Hz Inductive Load.

1 Amp at 30V dc Inductive Load

## Maximum Pressure

To ensure long service life select the Pressure Range as follows:

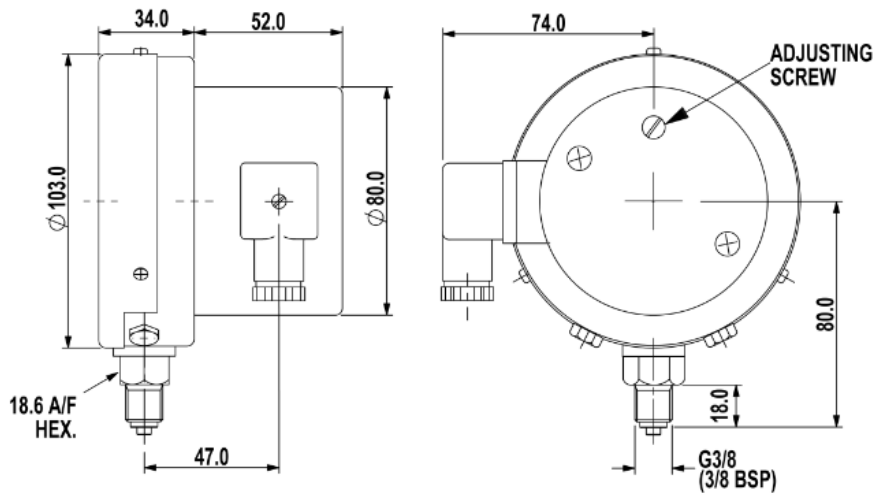
Dynamic pressure applications  $P_{max} = 75\%$  of Range

Static pressure applications  $P_{max} = 100\%$  of range.

Maximum pressure that can be applied is 125% of pressure range

## Technical Drawing

---



TYPE 3801