

# Bailey & Mackey Ltd



**Type 3801**

This type of switch has been specifically designed to handle high pressure gas applications for monitoring pressures over 42 bar, where the pressure to be monitored is higher than a diaphragm switch can accommodate. Based on the Bourdon tube principle there are no seals adding friction and consequently can be used in gas applications.

- Accurate and Stable
- Long service life
- Bourdon Tube Mechanism
- SPDT Micro-switch
- Gold Contacts Available
- CE Marked

Image Coming  
Soon

## *Mechanical Specifications*

### Pressure Ranges

10 to 100 bar  
10 to 200 bar  
20 to 400 bar  
30 to 600 bar

### Standard Materials

<b>Case</b>	Black Enamelled Steel
<b>Internals</b>	Coiled Steel Tube
<b>Connection</b>	Brass

**Temperature Limits**                      -10°C to +85°C

Electrical Connection via 4 pin plug & Socket

### **Electrical Rating**

10 Amp at 250V 50Hz Inductive Load.

1 Amp at 30V dc Inductive Load

### Maximum Pressure

To ensure long service life select the Pressure Range as follows:

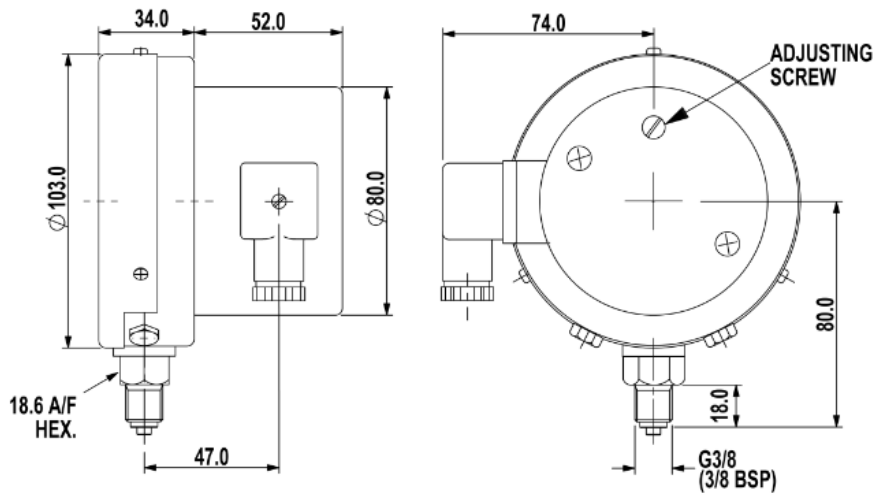
Dynamic pressure applications  $P_{max} = 75\%$  of Range

Static pressure applications  $P_{max} = 100\%$  of range.

Maximum pressure that can be applied is 125% of pressure range

### Technical Drawing

---



TYPE 3801